

NOVEMBER 2025



ETI Automation

# ADVANCED PALLETIZING SOLUTIONS

Efficient, Reliable, and Automated  
End-of-Line Handling.

# ENGINEERED FOR EFFICIENCY. BUILT TO LAST.

---

With over 25 years of proven experience, ETI Automation is a trusted leader in designing, manufacturing, and integrating premier palletizing and material handling solutions.

We are your strategic partner, dedicated to solving the unique challenges of modern industry. Our solutions are engineered for maximum efficiency, precision, and performance, trusted by over 65 companies around the world to automate their end-of-line processes.

## Key Pillars:

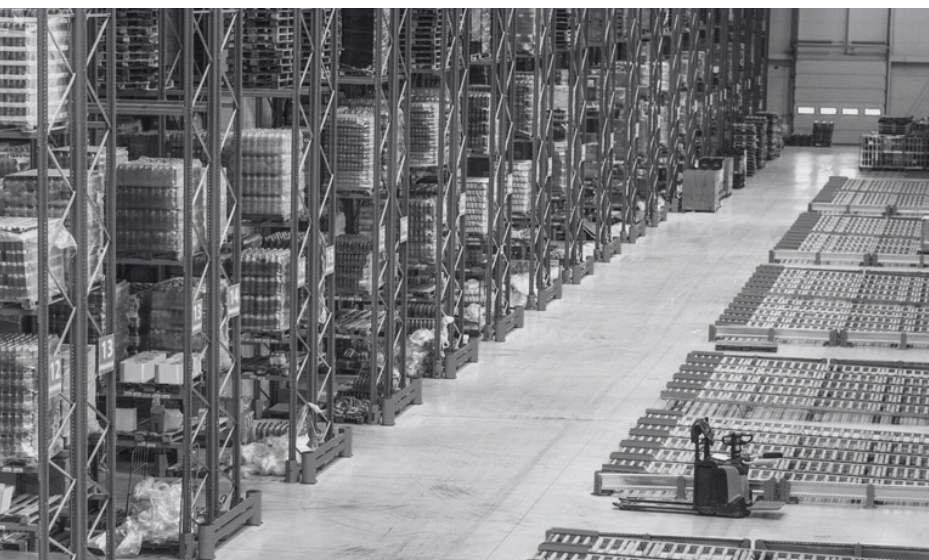
- ✔ **25+ Years of Expertise:** Proven industry leadership and technical knowledge.
- ✔ **Full Automation:** From single-cell robotics to fully integrated lines.
- ✔ **Custom Engineering:** Solutions are not just sold; they are designed specifically for your unique process.
- ✔ **Quality & Reliability:** Built to last, our systems ensure you minimize downtime and maximize output.

# PALLETIZING SOLUTIONS

Advanced robotic systems for safe, accurate, and efficient pallet stacking operations.

---

- **Robotic Palletizing**
- **Gantry Palletizing**
- **High Level Palletizing**
- **Low Level Palletizing**
- **Hybrid Palletizing**



## ➤ ROBOTIC PALLETIZING

Our robotic solutions provide robust performance, maximizing your efficiency and operational flexibility.

---

ETI Automation provides robotic palletizing solutions that offer efficiency, precision, and reliability. Our systems are designed to handle a wide variety of products, from bags and boxes to crates and drums, with high speed and accuracy.

### **Specifications:**

- Type: 4-axis, 3-axis, and 6-axis arm collaboration
- Payload: Up to 100 kg
- Layout Type: Conveyors & pallet on ground
- Products Handled: Bags, cartons, pails, plastic crates, tins, etc.



## > GANTRY PALLETIZING

Our most effective solution for palletizing heavy products on multiple production lines.

---

The linear gantry palletizer is a system made up of lightweight aluminum profiles. It's an accurate, robust, and cost-effective solution for palletizing products from multiple production lines simultaneously, equipped with custom gripper solutions.

### Specifications:

- Speed: 1-5 layers/min
- Payload: Up to 100 kg
- Layout Type: 1 to 2 infeed, 1 to 4 outfeed
- Products Handled: Bags, cartons, pails, plastic crates, tins, etc.



## > HIGH-LEVEL PALLETIZING

Our high-level palletizing machinery offers high-speed, automated stacking.

---

The high-level palletizer receives trays, bags, and various other types of equipment at a high level. It's a fast, flexible, and robust machine. ETI Conveyor has come up with unique, compatible components for high-level stacking.

### Specifications:

- Speed: 20-40 cases/min | 25-30 bags/min
- Payload: Up to 50 kg
- Layout Type: Customizable infeed/outfeed
- Products Handled: Cartons, bags, etc.



## > LOW-LEVEL PALLETIZING

Our low-level machinery provides on-floor level, safe, and cost-saving stacking solutions.

---

The low-level palletizer receives trays, cases, and bags on a floor level. The main advantage of this palletizer is its small footprint and its ability to be placed in a displacement or replacement area, which may be a table or staging station.

### Specifications:

- Speed: 15-20 cases/min | 20-25 bags/min
- Payload: Up to 50 kg
- Layout Type: Customizable infeed/outfeed
- Products Handled: Cartons, bags, single, and pails, etc.



## > HYBRID PALLETIZING

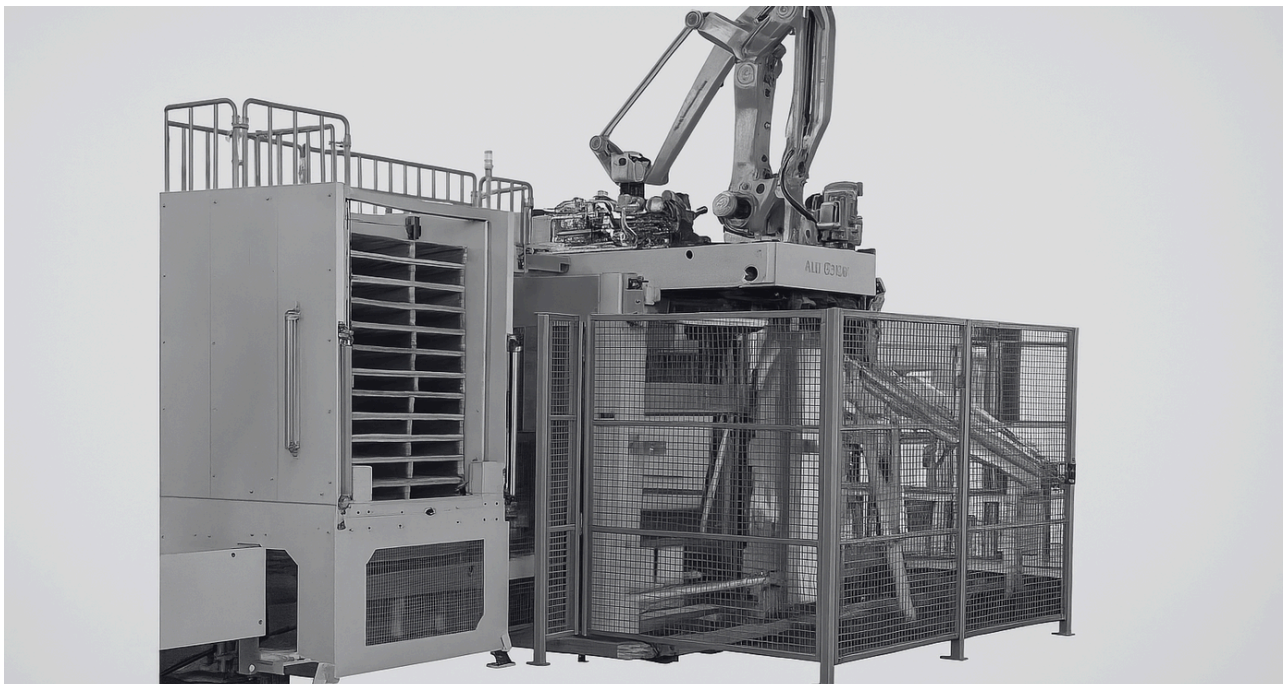
This system combines robotic and conventional palletizing, offering the best of both technologies.

---

ETI's hybrid palletizing system addresses the challenges faced by a broad area of manufacturing. The system uses a robotic arm to pick and place products onto a pallet, while a conventional palletizer handles the movement of the pallet. This combination provides a highly efficient, high-speed, high-throughput solution.

### Specifications:

- Speed: 30 cases/min | 2-5 layers/min
- Payload: Up to 50 kg
- Layout Type: Customizable infeed/outfeed
- Products Handled: Cartons, bags, etc.



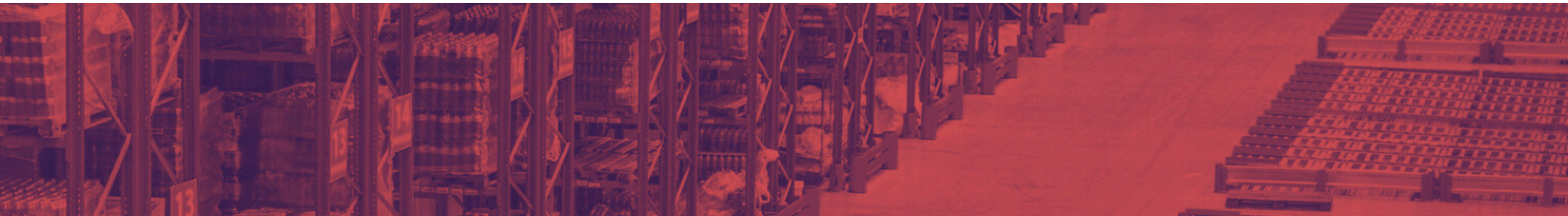
# OUR GLOBAL PARTNER

---

**Haier**

**frigoglass**

  
**VIDEOCON**





# CONTACT US

Discover how ETI Automation can automate your end-of-line process. Contact our expert team today.

---



[www.etiautomation.in](http://www.etiautomation.in)



[info@etiautomation.in](mailto:info@etiautomation.in)



+91-72065 52741